

TOUR BROCHURE



COUNCIL ROCK NORTH MARCHING BAND AND COLOR GUARD

HONOLULU,
HAWAI'I

FEBRUARY 2019



KI CONCERTS

www.KIconcerts.com



KI CONCERTS

Your World of Music

HONOLULU, HAWAI'I

WEDNESDAY, FEBRUARY 13

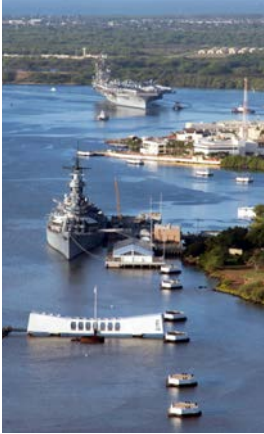
- Depart Philadelphia
- Arrive Honolulu
- Meet KIconcerts tour manager
- Introduction to Honolulu
- Check in
- Dinner daily
- Overnight Waikiki area

THURSDAY, FEBRUARY 14

- Breakfast daily
- Exchange program (tbd)
- Accompanying passengers arrive at exchange venue
- **Shared Concert (tbd)**
- Overnight Waikiki area
- Walking tour of Honolulu seeing Hawaii's most historic buildings including the Iolani Palace, Hawaii State Capital, the Kamehameha I Statue, Kawaiaha'o Church, the Mission House Museum and the Old Federal Building - accompanying passengers continue to tour Waikiki



PROGRAM



FRIDAY, FEBRUARY 15

- **Workshop with Brigham Young University-Hawaii (tbd)**
-- accompanying passengers transfer directly to the Polynesian Cultural Center
- Be immersed in the cultural experience of Polynesia at the Polynesian Cultural Center. Participate in native Polynesian activities and witness the Canoe Pageant. The evening will be complete with an authentic Ali'i Luau that includes the King's procession and a spectacular show afterwards
- Overnight Waikiki area

SATURDAY, FEBRUARY 16

- Visit Diamond Head National Park, be up with the sun and hike to the top of the iconic ancient crater, Hawaii's most recognizable landmark. The 1.5-mile round trip to the top of the volcanic crater offers a breathtaking 365-degree view of Oahu
- Tour the Iolani Palace – a living restoration of Hawaiian heritage and the epicenter of multicultural Hawaii
- **Performance at Ala Moana Shopping Center (tbd)**
- Overnight Waikiki area

SUNDAY, FEBRUARY 17

- Visit the USS Arizona Memorial at Pearl Harbor, the resting place of 1,102 of the 1,177 sailors and marines killed on the USS Arizona during the Japanese surprise attack on December 7, 1941
- See the USS Missouri, the historic battleship on which the official surrender of the Japanese occurred, ending WWII
- **Parading and static performance at the USS Missouri (tbd)**
- Sail the Star of Honolulu, Dolphin Cruise. See dolphins in their natural habitat and snorkel with other vibrant sea life
- Overnight Waikiki area

MONDAY, FEBRUARY 18

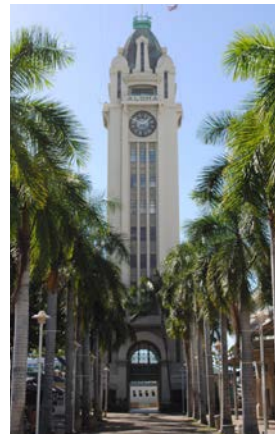
- **President's Day marching band performance (tbd)**
- Explore Waikiki Beach, soak up the sun at one of the most visited beaches in the world
- Say farewell to Hawaii with a beach dinner
- Overnight Waikiki area

TUESDAY FEBRUARY, 19

- Depart Honolulu

*** Itinerary subject to change.*

*** Confirmation of performances is dependent upon early receipt of performance information: biographies, pictures, recordings and repertoire*



PACKAGE DETAILS

PRICE PER PERSON

IF PAID BY CHECK OR DIRECT DEBIT

\$3,095

INCLUSIONS

- Round-trip airfare from Philadelphia, economy class
- Air taxes and fuel surcharges
- Private motor coach throughout with driver
- 3 star accommodations, based on quad occupancy
- Breakfast and dinner daily
- Professional tour escort throughout tour
- All scheduled sightseeing and entrance fees
- Concert organization and promotion listed in itineraries
- Core travel insurance benefits
- Tips

EXCLUSIONS *(optional)*

- Twin room supplements by check or direct debit - \$375
- Single room supplements by check or direct debit - \$1,540
- Travel insurance upgrades
- Allocation of specific seat assignments on flights
- Meals other than specified in the itinerary
- Instrument hire
- Excess baggage and transportation of oversize instruments
- Personal expenses, eg. drinks, laundry, phone calls
- Any other items not mentioned in inclusions above

PRICE NOTES

- All prices are in USD, based on a minimum of 50 paying travelers

TRAVEL INSURANCE

PROVIDED BY KICONCERTS

Klconcerts has purchased the following benefits for you which come into effect once your trip has commenced:

- Trip Interruption- contribution to return air fare of up to \$500
- Trip Delay – up to \$150/day when you are delayed for 6 hours or more
- Missed Connection of 3 hours or more – up to \$500
- Baggage/Personal Effects – loss, theft or delay - \$1,500 (\$250 per article)
- Baggage Delay – 24 hours or more - \$300
- Accident & Sickness Medical Expense up to \$25,000
- Emergency Evacuation & Repatriation up to \$100,000
- Worldwide Emergency Assistance Services

UPGRADING YOUR PROTECTION

Two upgrade options are offered that extend the provisions already included:

Option One (A) \$114

- Trip cancellation for the reasons outlined in the insurance certificate
- Trip interruption for the reasons outlined in the insurance certificate

Option Two (B) \$170

In addition to the benefits in Option A, you may cancel your trip for any reason up to 48 hours prior to the scheduled

departure and receive 75% of non-refundable trip costs. **This coverage must be purchased with your first payment**

Please note these premiums may increase if you purchase additional services

This document contains highlights of the plan. See the Klconcerts travel insurance flyer and review the Certificate of Insurance (Form TP-401-CRT) for complete terms, including benefits, conditions, limitations and exclusions that apply. The certificate is available from Klconcerts: Klparticipants@Klconcerts.com.

Those purchasing travel insurance will enter into a relationship with Travel Insured International the insurance provider whose coverage Kl offers. Plans are underwritten by the United States Fire Insurance Company. Fairmont Specialty and Crum & Forster are registered trademarks of United State Fire Insurance Company. The Crum & Forster group of companies is rated A (Excellent) by AM Best Company 2013.

Travel Assistance Services are provided by an independent organization and not by United States Fire Insurance Company or Travel Insured International.

TERMS AND CONDITIONS

Klconcerts LLC, a Colorado limited liability company, (hereinafter referred to as “KI”), accepts reservations subject to the details outlined in this brochure and these additional conditions. The first payment constitutes acceptance of all conditions set out in this brochure.

PAYMENT CONDITIONS

No order will be processed without a first payment and reservation is not guaranteed if payments are not made by the due date. Should any payment be in arrears more than one payment period and no payment arrangement entered into, KI reserves the right to cancel a passenger's participation in the tour and to hold all payments made to date. Should a final payment not be received on time, KI reserves the right to not issue an airline ticket, to cancel a passenger's participation in the tour and to hold all payments made to date.

LATE APPLICATIONS

Applications may be submitted after the due date for the first payment and, subject to flight, coach and hotel availability, will be accepted. Such applications must be accompanied by a payment equal to the amount due by the date of the application. Should that amount not be received, the passenger will be deemed to be in arrears and the above conditions will apply.

ITINERARY VARIATION

KI is committed to continually improving itinerary features whenever realistic improvements are possible. If unforeseen circumstances beyond our control necessitate, we reserve the right to vary itineraries and/or destinations and to substitute hotels if circumstances warrant. Venues, repertoire and performances may be adjusted or modified, with final arrangements contingent upon the number of performance participants.

AIR TRANSPORTATION

Air Transportation is in Economy Class on airlines determined by KI that are IATA (International Air Transportation Association) and ARC (Airlines Reporting Corporation) member carriers.

AIR DEVIATION

Those wishing to deviate from the air arrangements made for the group have two options:

1. To make their own flight arrangements ('Land Only'): those wishing to take this option will need to make all their own flight arrangements, including sectors by air within the tour. Any person choosing the 'land only' option must arrange their own ground transportation to and from the airports. They are able to utilize the group transport from and to the airport provided there is no delay or change required to the group arrangements. KI is not in a position to offer assistance regarding ground or air transport to land only travelers. If the 'land only' option is selected after the initial full-tour reservation has been made, a \$175 change fee up to 120 days prior to departure will apply. Anyone changing to a 'land only' option less than 120 days prior to departure will be subject to a \$1,000 change fee. Those choosing a 'land only' package will not count towards the group's complimentary positions.
2. To start the tour earlier than or return later than the group. Most airlines will permit some members of the group to deviate from the group's schedule. You need to fly into the group's arrival city or depart from the same city. Only the date can change. The specific conditions applicable to the group's tour will be advised once the flights are confirmed. A deviation fee of \$350 per identical booking plus any applicable additional airfare will be charged. No applications will be received after 120 days prior to departure.

CANCELLATIONS

The following cancellation charges will apply if any passenger cancels their tour (the insurance premium, whether included in the tour price or paid separately, is not refundable).

50% of funds paid by the passenger will be refunded from receipt of the first payment until the date prior to the due date for the final payment

No funds will be refunded to the passenger after the due date for the final payment or if any payments are in arrears at the date of cancellation

Should world conditions affect the staging of the tour, the U.S. State Department bans travel to the countries included in the itinerary or should KI determine that



TERMS AND CONDITIONS

the safety of its clients is otherwise better served, KI reserves the right to offer a comparable program at an alternate destination. Should this offer not be accepted by each passenger within 10 days of the offering, the cancellation penalties outlined above will apply. All cancellations must be made in writing and sent by mail, fax or e-mail to KI.

SUBSTITUTIONS

KI recognizes that circumstances occur where it may be necessary to cancel participation in this program. Substitutions are encouraged so that cancellation fees can be avoided. The only additional cost for a substitute is the insurance premium, where an insurance package has been purchased, as these payments cannot be transferred. KI must be notified of substitution at the time of cancellation. Substitution deposits/payments must be received by KI before a refund to the original passenger is made. Substitutions must be made no later than 90 days prior to travel or charges will apply. This clause does not apply if KI has canceled a person's participation in accordance with the provisions of these terms and conditions.

FREQUENT FLYER PROGRAM MEMBERS

KI will pass frequent flyer program information to the airlines if such information is received no later than 60 days prior to travel. It is the individual traveler's responsibility to ensure the airline inserts this information into their booking. Many airlines do not provide mileage accrual for group travel. Travelers should check with their frequent flyer carrier to determine if they qualify for any mileage accrual. KI is unable to provide ticket copies after departure.

ARBITRATION

Any disputes shall be resolved by binding arbitration in the County of El Paso, Colorado through the American Arbitration Association.

RESPONSIBILITY

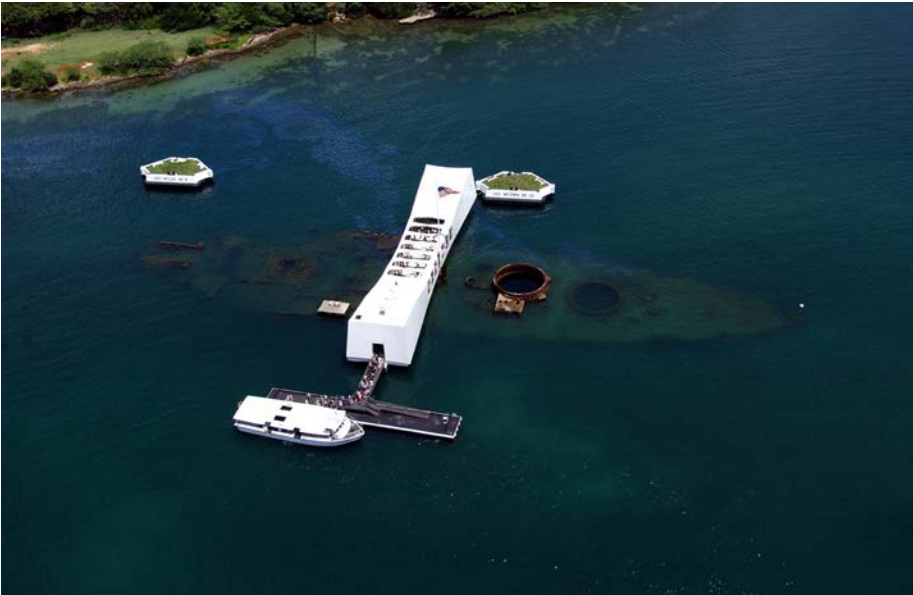
The responsibility of KI is strictly limited. KI acts only as agents for transportation companies, hotels, and other public services and it is the express condition that we shall not become liable for delays, losses, or accidents incurred by said persons or operators to passengers and baggage from whatsoever cause. KI also reserves the right to change the routing, hotels, and/or sightseeing and any service offered, should local conditions in our opinion warrant; the extra cost, if any, must be paid by the passengers. The right is reserved to refuse any person on this tour. The airlines and other transportation companies concerned are not to be held responsible for any act or omission or

event during the time passengers are not on board their planes or conveyances. This passage contract in use by the carriers concerned when issued shall constitute the sole contract between the airlines or other carriers and the purchasers of the tour and/or passengers. All additional expenses caused by war, landslides, strikes, weather delays, illness or accidents are the responsibility of the passengers. By utilizing the services of KI, the tour member agrees that the maximum liability for KI is the price of the tour and that the exclusive venue for all claims, actions or proceedings against KI of whatsoever nature arising out of this contract shall be the County of El Paso, Colorado, and such claims, actions, or proceedings shall be determined according to laws and jurisdiction of the State of Colorado.

VARIATIONS TO TOUR CONDITIONS

Any variations or additions to the conditions governing this tour will only be valid if provided in writing by an Officer of KI.





PRODUCERS

For over 35 years, **Klconcerts** (Kingsway International) has provided choirs and instrumental ensembles with affordable and unforgettable international and domestic custom tours and festivals. Klconcerts combines unique destinations, awe-inspiring venues, warm audiences with renowned composers, educators, conductors and musicians. Together with our talented local concert tour organizers we facilitate a deep sharing of culture...the essence of performance travel.



www.youtube.com/KlconcertsVideos

Performance travel has always presented challenges requiring a myriad of details to combine in order for life changing magical musical moments to occur. This has never been truer than today. KI looks to partner with you in managing these challenges in new and creative ways.

Our recent clients have shared their views on our tours – have a look at www.Klconcerts.com/testimonials



5245 Centennial Blvd, Suite 202
Colorado Springs, CO 80919-4405
P: 719 260-0200 F: 719 598-8674

info@Klconcerts.com | Klconcerts.com

